

## OMOM<sup>®</sup> Capsule Endoscopy System

Smart CE Platform



---

## Capsule Endoscopy is evolving.

We took a step forward and envisioned the next step.

With enhancements all over the platform,  
it is now smarter than ever.

Smarter,  
procedure becomes easier and more streamlined.

Smarter,  
work with more efficiency and achieve higher accuracy.

Smarter,  
we can build a better future.

That's what we call Life Insights.

---



## Design

Innovation isn't always obvious to the eye, but if you take a closer look, you'll discover all kinds of efforts we put in to refine the design.

The capsule enclosure is so light and compact, yet harbors an incredible image sensor with enduring 10-hour battery life. LED light system ensures an even light distribution and optimal illumination. A robust belt antenna system fits the human contour comfortably and saves preparation time.

The system is simple, yet packed with essential features to exceed your every expectation.



## Convenience

A simple and streamlined procedure remains our top priority. That's why we are constantly adding new features like Auto Pairing and Real-time View to make our products simpler and easier to use for healthcare professionals, making more possibilities for point-of-care than ever before.



### Auto Pairing

Now, you can complete the process of pairing by placing the capsule near the recorder. No input on the computer is needed.



### Real-time View

Recorder can now display real-time images from the capsule. You can easily confirm the capsule's location.

## Efficiency

Built upon our robust image station software, new modules and functions were added to help physicians get results faster and more reliable.



### Quick View

Quick View can dramatically accelerate your browsing process by skimming redundant image sequences.



### Bleeding Detection

The Suspected GI Bleeding (SGIB) detection can swiftly scan a vast array of pictures and identify any images with suspected bleeding, allowing the physician to quickly locate any area of interest.



### Split-View

Physicians can now inspect case images and edit report in the same screen without switching interfaces.



### ICE RGB

Imaging Color Enhancement tools separates different RGB spectrums, gives you a more detailed view for mucosa and capillaries.

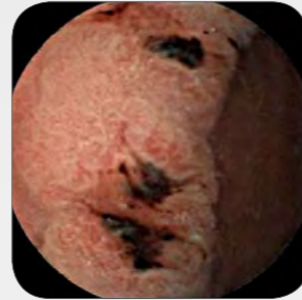
## Stomach



Gastric Antrum



Pylori Erosion

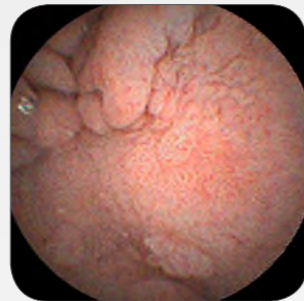


Hemorrhage

## Duodenum



Duodenal Papilla

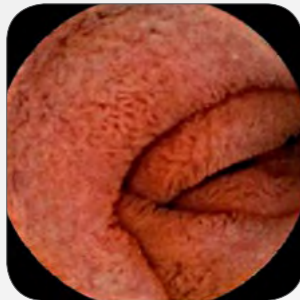


Polyps

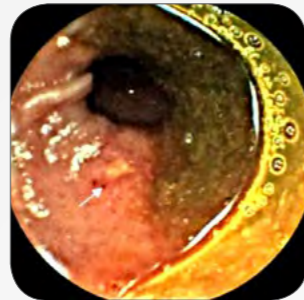


Bleeding

## Small Intestine



Descending Part



Ulceration

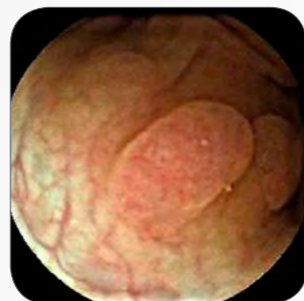


Crohn's Disease

## Colon



Normal Structure



Polypus



Erosion

## Features and Specifications

### OMOM Capsule 2

- Advanced MEMS Image Sensor
- Dimension 25.4 mm \* 11 mm
- Weight 4.5 g
- Record Time > 10 hours

### Antenna & Data Recorder

- Wireless Transmission
- Auto Pairing with Capsule
- Real-time View

### Image Station Software

- Quick View
- Split-View
- Multi-View up to 15 windows
- Image Enhancement
- Suspected GI Bleeding Detection
- RGB Imaging Color Enhancement
- Landmark
- Diagnosis Atlas
- Report
- Export Image Sequence
- Lite Version

Chongqing Jinshan Science & Technology (Group) Co., Ltd.

Address: 18 Nishang Road, Yubei District, 401120 Chongqing, China

Tel: +86-23-86098099 Fax: +86-23-86098082

[english.jinshangroup.com](http://english.jinshangroup.com)

[international@jinshangroup.com](mailto:international@jinshangroup.com)



Distributed by: